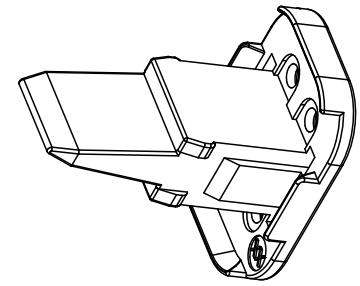
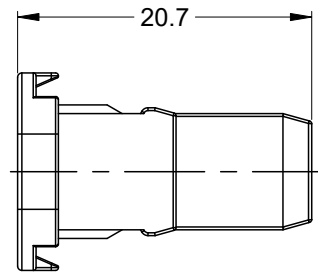
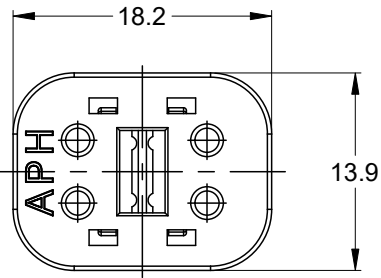
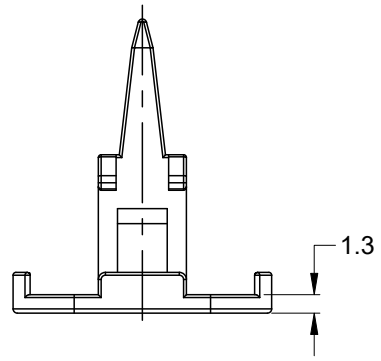


REVISIONS					
REV	ECO	DESCRIPTION	DATE	BY	APPR
A3	--	RELEASE NEW DWG FORMAT	18/SEP/13	DRP	
A4	--	UPDATE DRAWING	10/MAY/19	JOE	TOMMY
A5	--	ADD NEW COLOR	08/JAN/20	BROOK	TOMMY
A6	C1437S	INCREASE LIMIT RIBS	22/SEP/21	RONALD	TOMMY
A7	--	ADDED APH MARK TO VIEW	15OCT24	JHEAD	



NOTES: UNLESS OTHERWISE SPECIFIED

- MATERIAL: THERMOPLASTIC;
STANDARD COLOR: GREEN
OPTIONAL COLOR: ORANG (P/N : AW4S-ORG)
- RoHS COMPLIANT
- CAVITIES: 4
- KEYED: N/A
- USE WITH CONNECTORS AT06-4S*
(* = MODIFICATIONS AND/OR COLORS)
- ALL DIMENSIONS ARE FOR REFERENCE USE ONLY.

AW4S		DESCRIPTION		ITEM
QUANTITY	PART NUMBER			
MATERIALS LIST				
<small>UNLESS OTHERWISE SPECIFIED</small> 1) All dimensions are in metric(mm). 2) Tolerances are as follows: 1 PL DEC ±0.30 Fractions ±1/64 2 PL DEC ±0.15 Angles ±1° 3 PL DEC ±0.08 3) Note reference =		<small>SIGNATURES</small> DRAWN: RONALD 22/SEP/21 CHECKED: ORION 23/SEP/21 ENGINEER: APPROVAL: TOMMY 24/SEP/21 CUSTOMER:		 Sine Systems - www.amphenol-sine.com 44724 Morley Drive Clinton Township, MI 48036
<small>MATERIAL SPECIFICATIONS:</small> THIS DRAWING IS SUPPLIED FOR INFORMATION ONLY. DESIGN FEATURES, SPECIFICATIONS AND PERFORMANCE DATA SHOWN HEREON ARE THE PROPERTY OF THE AMPHENOL CORPORATION. NO RIGHTS OF REPRODUCTION ARE IMPLIED. ALL DIMENSIONS ARE SUBJECT TO NORMAL MANUFACTURING VARIATIONS.		S-WEDGELOCK, 4 POS ITION, AT SERIES		SIZE: B C- DWG NO: AW4S REVISION: A7
<small>PROCESS SPECIFICATIONS:</small>		SCALE: NONE		SHEET 1 OF 1
<small>NEXT ASSY:</small>				

TITLE: S-WEDGELOCK, 4 POSITION, AT SERIES
DWG NO: AW4S
REV: A7
SH: 1
OF: 1